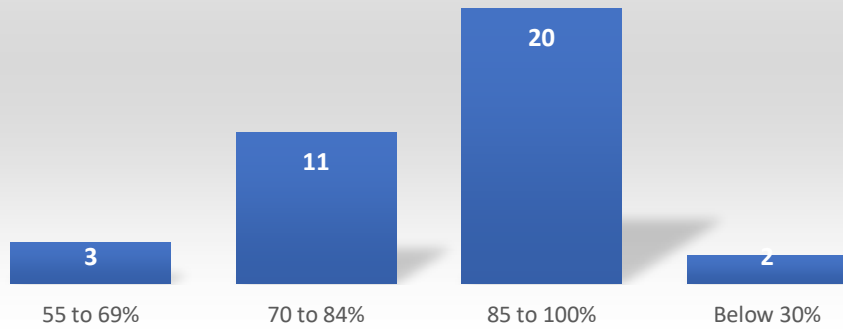
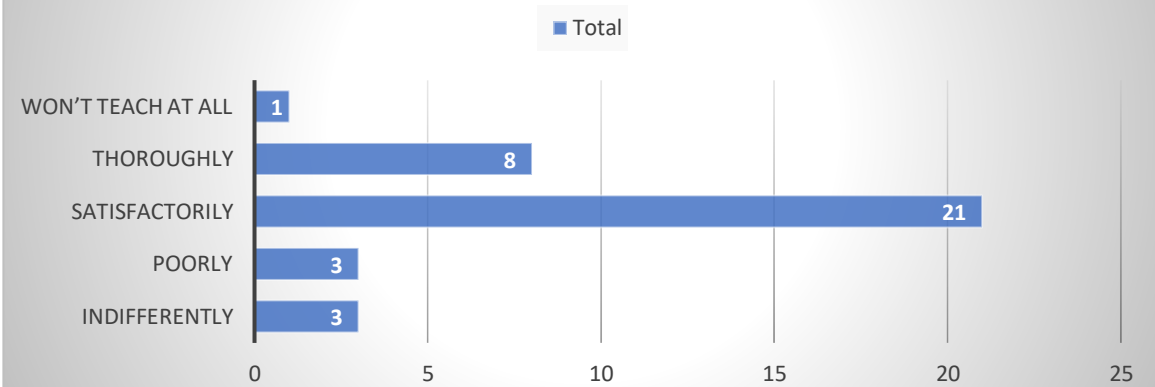


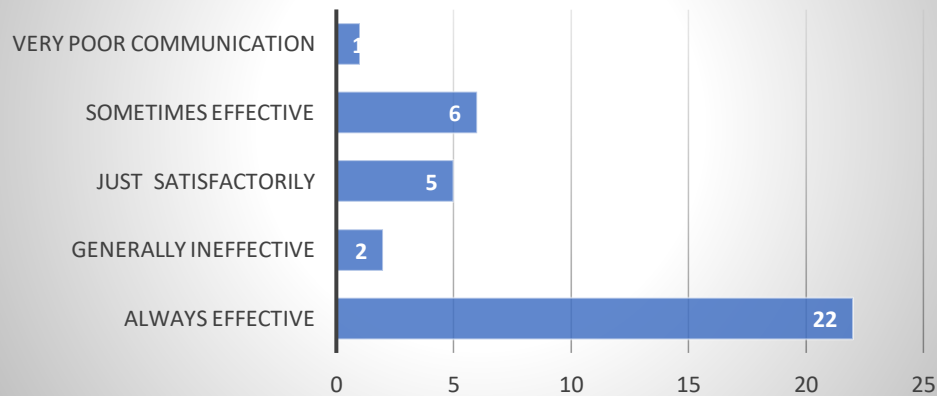
Count of How much of the syllabus was covered in the class?



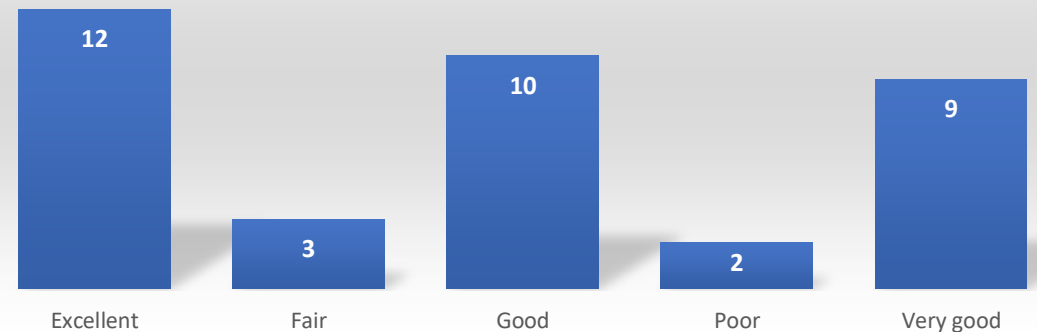
Count of How well did the teachers prepare for the classes?



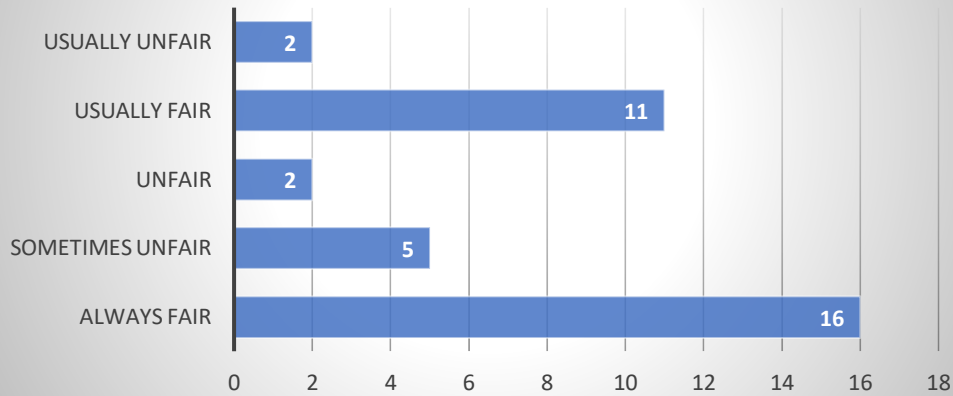
Count of How well were the teachers able to communicate?



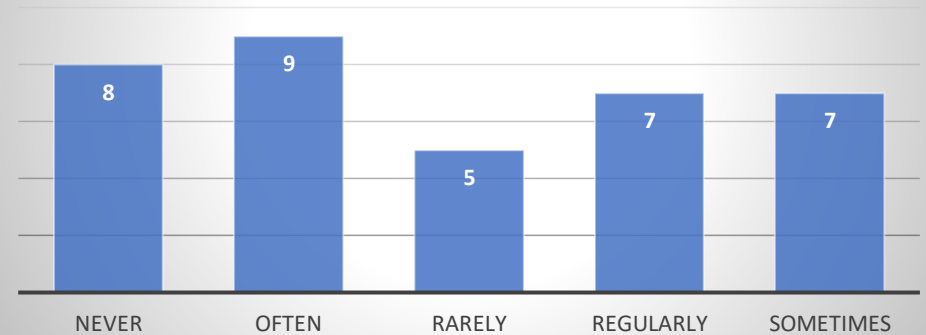
Count of The teacher's approach to teaching can best be described as



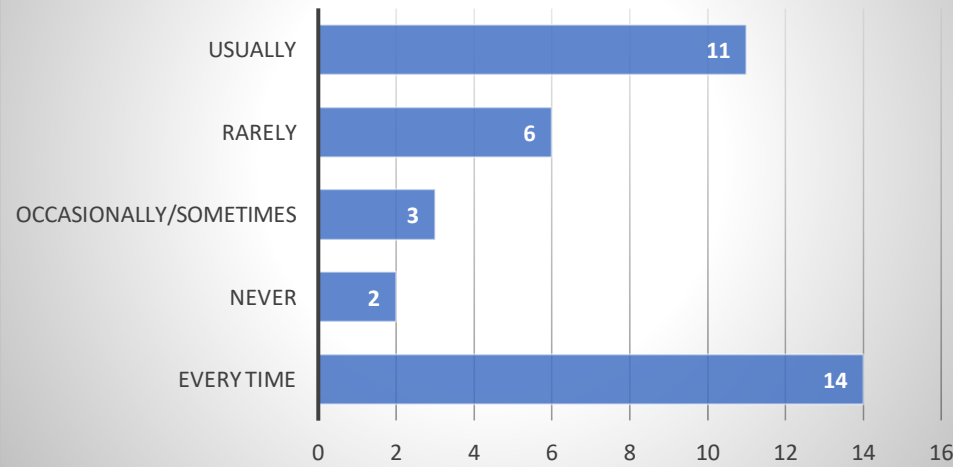
Count of Fairness of the internal evaluation process by the teachers



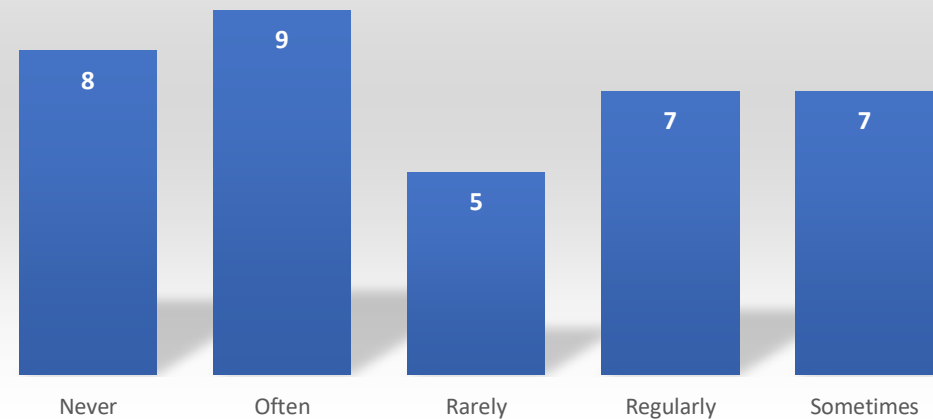
Count of The institute takes active interest in promoting internship, and field visit opportunities for students.



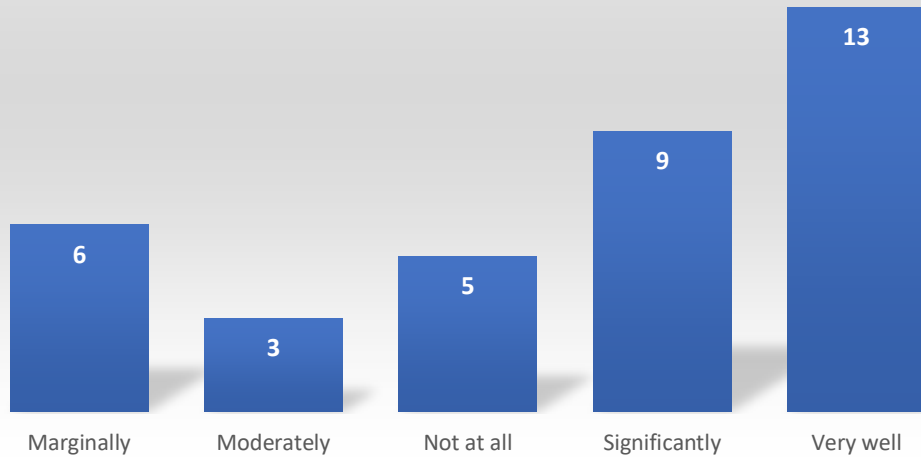
Count of Was your performance in assignments discussed with you?



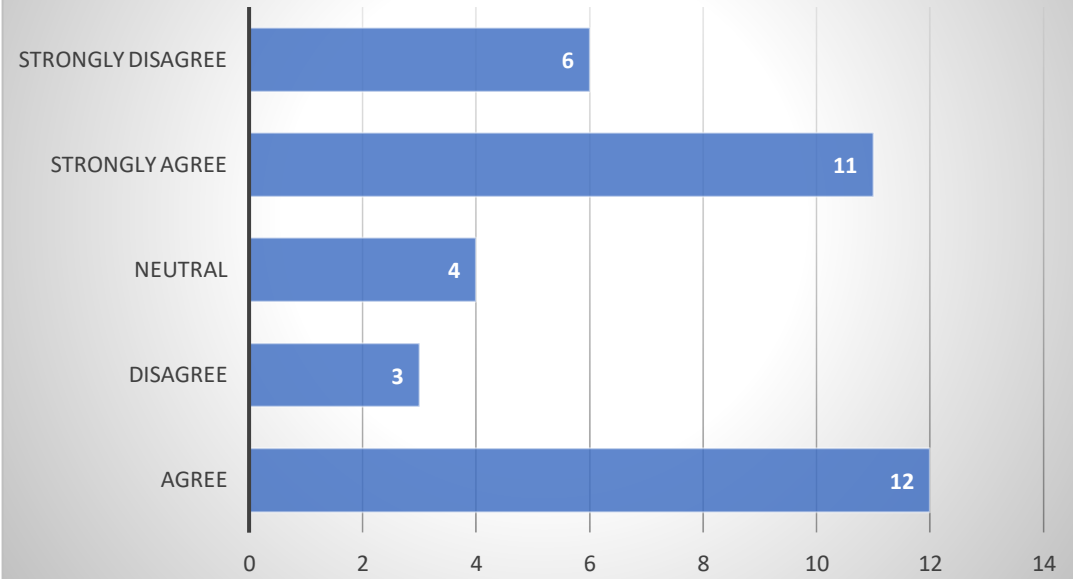
Count of The institute takes active interest in promoting internship, and field visit opportunities for students.



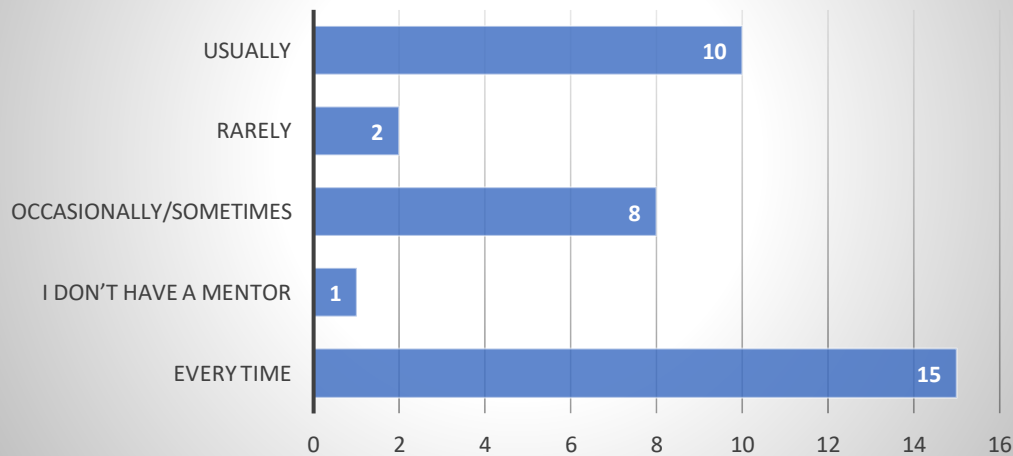
Count of The teaching and mentoring process in your institution facilitates you in cognitive, social and emotional growth.



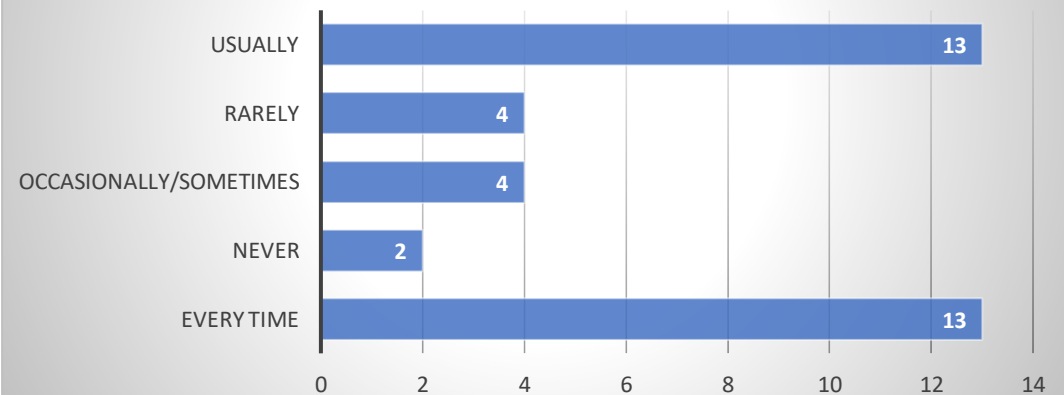
Count of The institution provides multiple opportunities to learn and grow



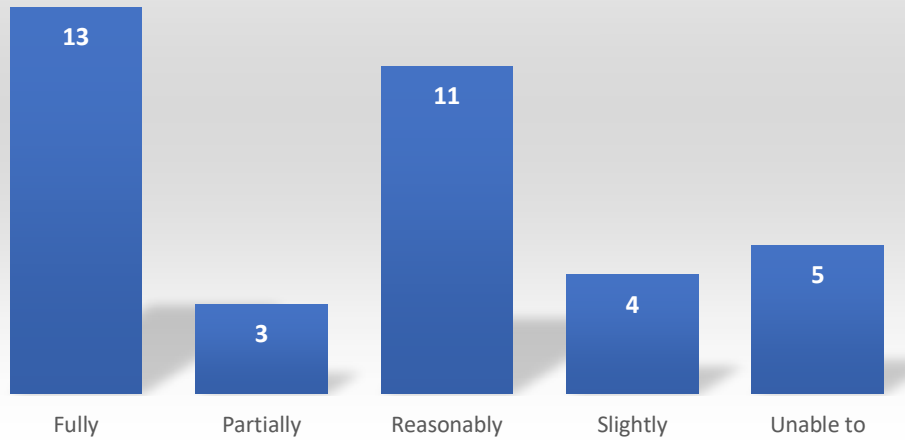
Count of Your mentor does a necessary follow-up with an assigned task to you.



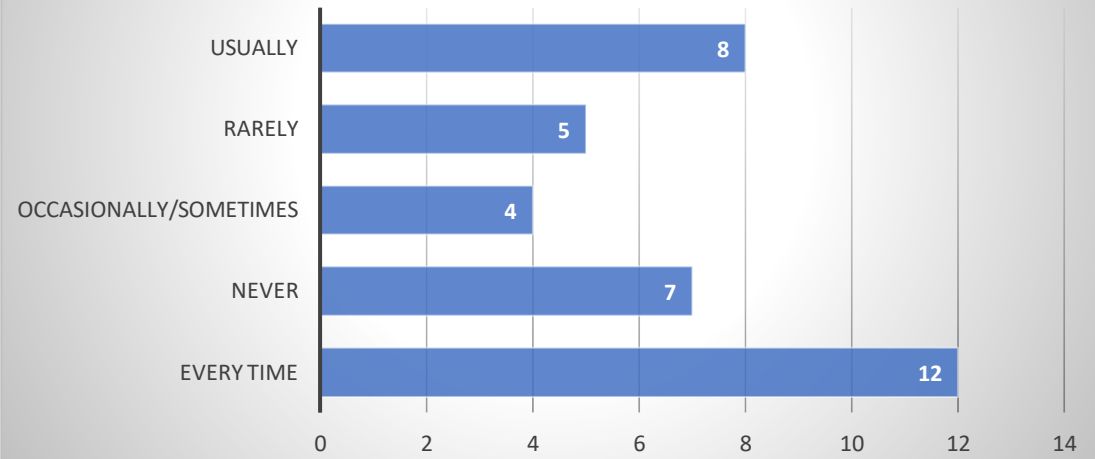
Count of The teachers illustrate the concepts through examples and applications.



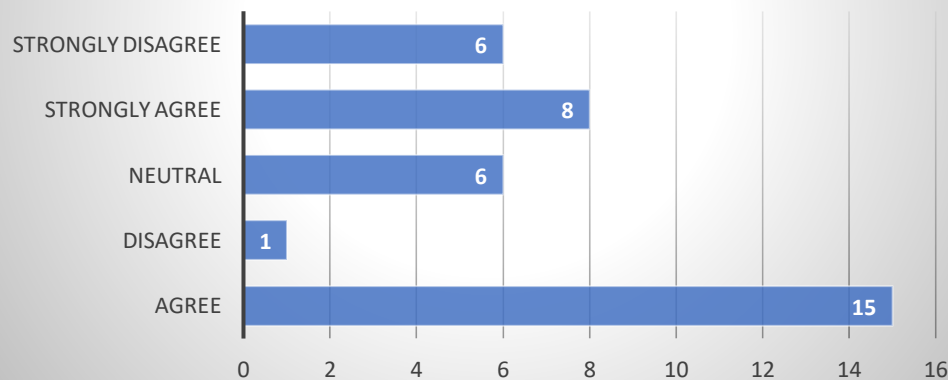
Count of The teachers identify your strengths and encourage you with providing right level of challenges.



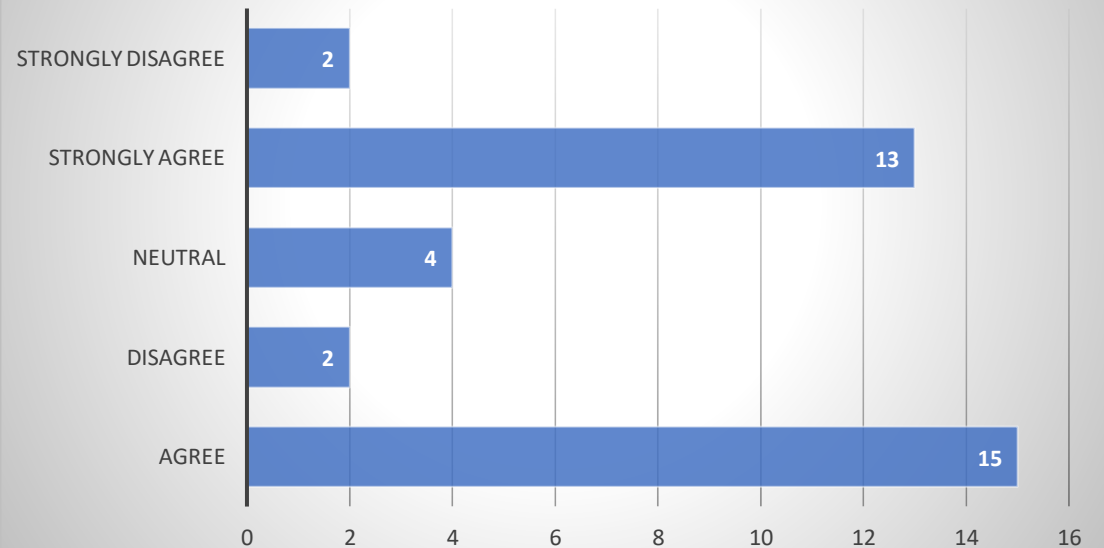
Count of Teachers are able to identify your weaknesses and help you to overcome them



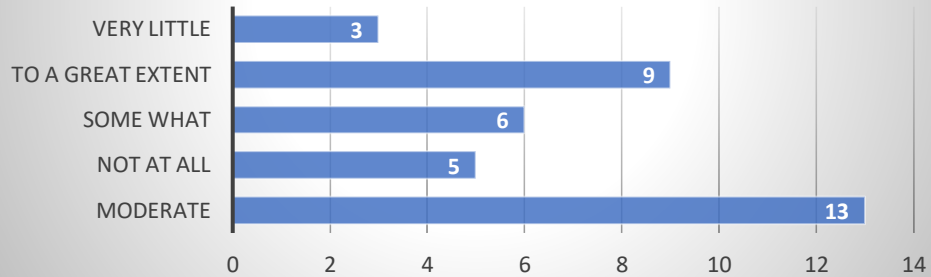
Count of The institution makes effort to engage students in the monitoring, review and continuous quality improvement of the teaching learning process.



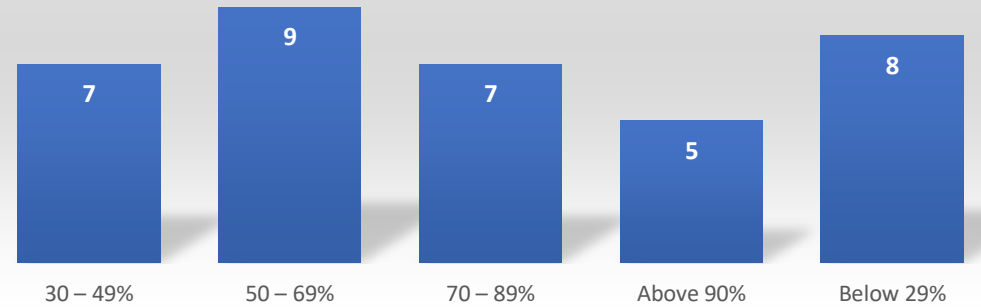
Count of Teachers encourage you to participate in extracurricular activities



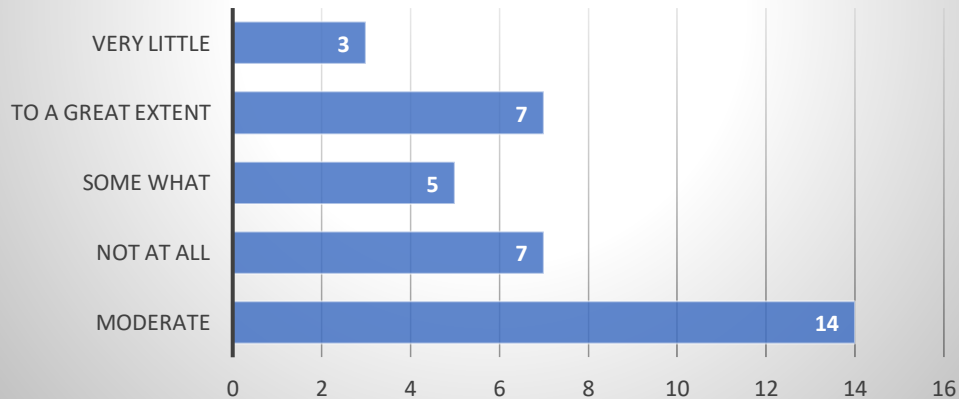
Count of Efforts are made by the institute/ teachers to inculcate soft skills, life skills and employability skills to make you ready for the...



Count of What percentage of teachers use ICT tools such as LCD projector, Multimedia, etc. while teaching.



Count of The institute/ teachers use student centric methods, such as experiential learning, participative learning and problem solving methodologies for enhancing learning experiences.



Count of The overall quality of teaching-learning process in your institute is very good

